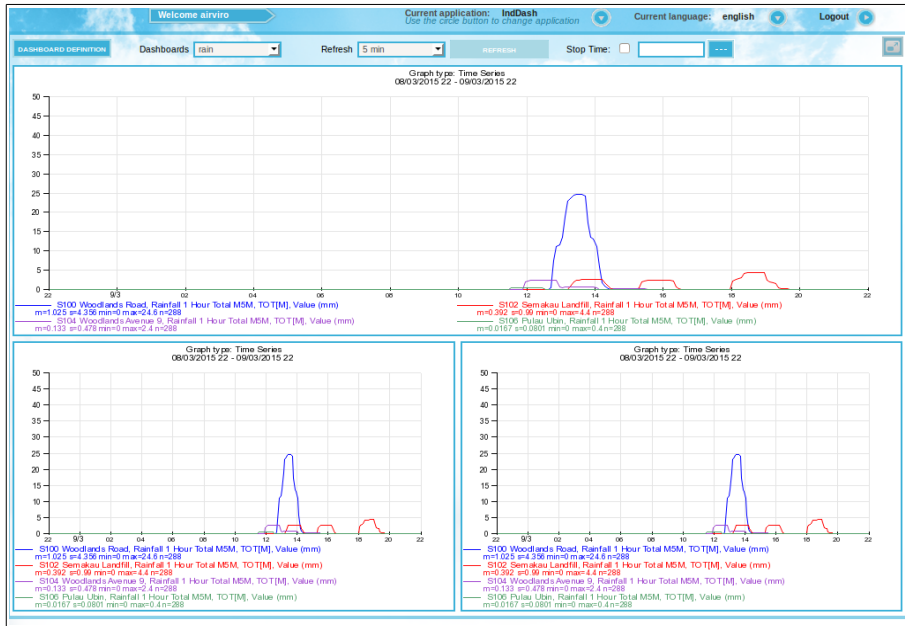




Airviro User's Reference



Working with Indico Dashboard

An easy way to visualising graphs and tables

Amendments

Version	Date changed	Cause of change	Signature
4.00	May 2015	New Module	GS
4.01	Aug 2018	Review	GS
5.01	Jan 2020	Review	GS
5.01	Dec 2020	Review	DC

CONTENT

11.1 INTRODUCTION.....	5
11.2 GETTING STARTED.....	5
11.3. MAIN WINDOW.....	6
11.4 DASHBOARD DEFINITION.....	7
11.5 EXPORT A GRAPH / TABLE.....	9

11.1 Introduction

Indico Dashboard is used to display various graphs and tables on the same webpage, usually in real time. This module uses graphs and tables previously defined in Indico Presentation which have been saved as Macros. These Macros can be used to define new Dashboard layouts in the Dashboard Definition page. The Dashboard layouts created are then saved in the Airviro server in the same way as the Indico Macros.

Airviro version v5.01 or higher don't need Java Runtime Environment to run.

This Airviro module runs on any PC or other devices running Internet Explorer 9 or later, Firefox or any other Mozilla based browsers.

11.2 Getting started

Once Airviro has been properly installed on the server, you can start using it by typing the correct URL in your web browser over the Intranet/Internet.

After logging in to Airviro with your user-ID and password, a domain must first be selected, and then **Indico Dashboard** should be chosen from the available modules.

At the top of the window, in **Current application** the name of the module actually selected is shown. Clicking on the [down arrow] button beside the name other modules can be selected. (*Figure 11.1*)

Clicking on the **Current language** [down arrow] button it is possible to select the language to work with. This functionality is not yet implemented.

By clicking on the **Logout** [down arrow] button, the current module is closed and the Airviro login page is displayed instead.



Figure 11.1 Main menu.

11.3. Main window

The Dashboard Module has the following options on the Main window:

- Dashboard definition: Used to define new dashboard layouts or to modify the existing ones.
- Dashboard: Contains a list of available dashboards that can be selected to display graphs and tables in a specific predefined layout
- Refresh: this button displays the dashboard with the latest data. It is also possible to specify a preset refresh interval from 1 minute, up to 1 hour. The dashboard then refreshes automatically. (See Figure 11.2)
- Stop time: Used to display historical data. By default the stop time of the data being shown is “now”. In order to show historical data other stop date/time than “now” must be specified. Either the stop time can be typed directly into the text box or otherwise by pressing the [...] button, it opens a calendar that can be used to select a date. The length of the time periods shown in the graph/tables are defined in the macros created for those graphs/tables and these can be changed using Indico Presentation.

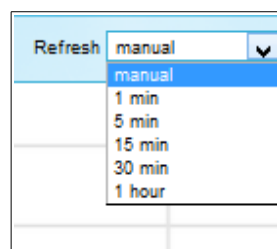



Figure 11.2 Refresh Intervals.

-  This button is used to maximise the size of the dashboard so that it uses the whole space of the web browser.

Each graph/table can be enlarged in a new modal window by clicking on them. Depending on the installation, graphs using HighCharts will include special features and functionalities.

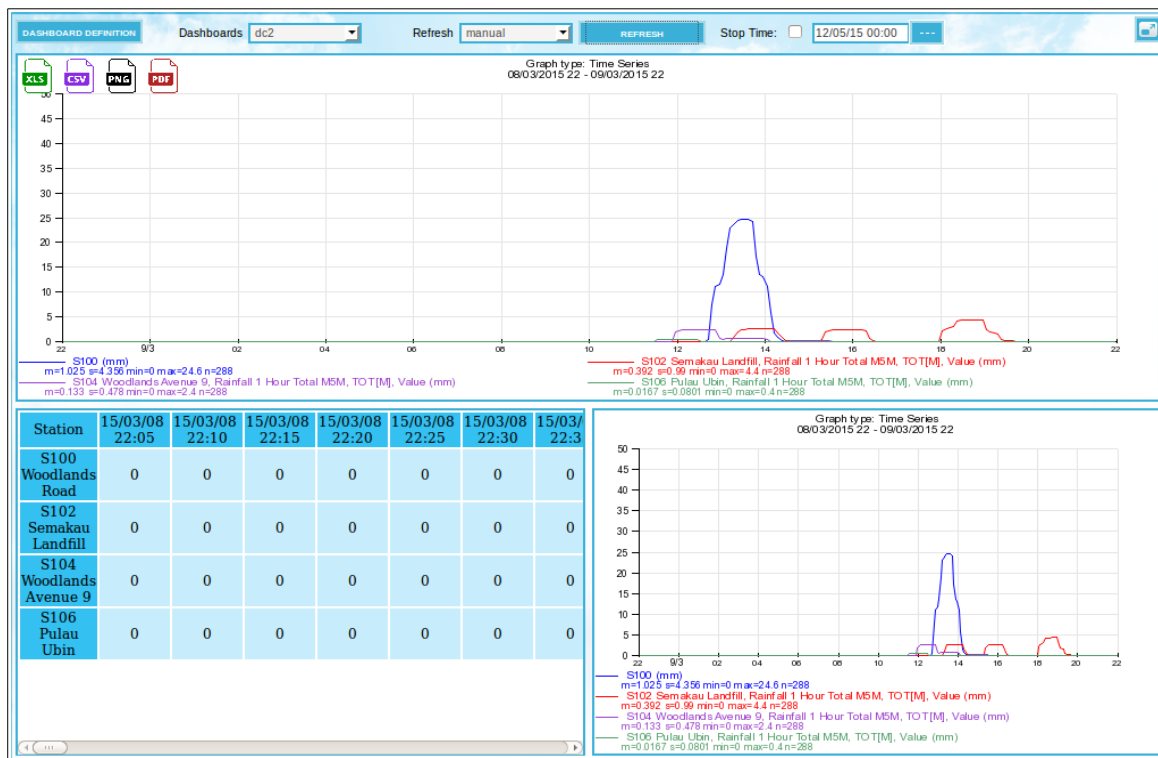


Figure 11.3. Dashboard Graphs / Tables.

11.4 Dashboard definition

The Dashboard definition page, is used to add, edit and delete dashboards. Use [**BACK**] button, to return to the main window.

For creating a new dashboard, a unique name must be entered, and a layout should be defined.

Firstly, the size of the dashboard in grid squares (X,Y) must be specified. The maximum

size is 4 cells horizontally (y) and 4 vertically (x). Then, the grid so defined can be divided into sections using the combo box in each grid cell, The cells within the same section will have the same number. Each section will contain a graph or table to be displayed. Sections must have a square or rectangular shape. See *Figure 11.4. Dashboard Definition.*

The [CHECK LAYOUT] button is used to verify and preview the layout just defined. Each section of the dashboard must be associated to a macro.

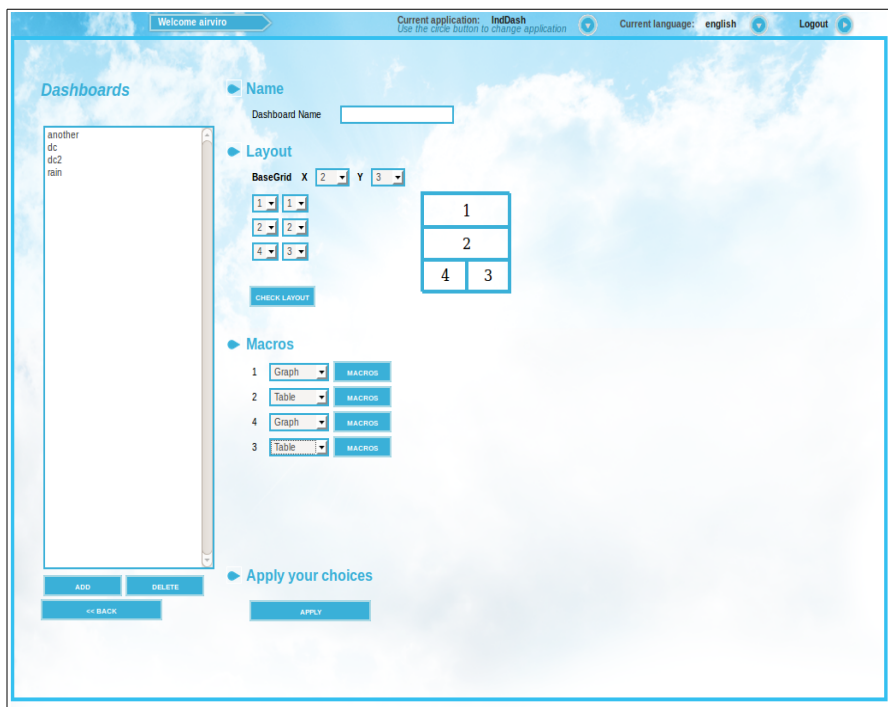


Figure 11.4 Dashboard Definition.

Once the layout has been verified and accepted, several rows of options will appear; one row for each section.

Each section should contain either a graph or a table. Use the combo boxes to select which one it is. Then, select a macro for each section pressing the button [MACROS]. The macros are defined in the Indico Presentation and are stored in the user's home directory.

Then, click on **APPLY** to save the dashboard definition.

11.5 Export a graph / table

By positioning the mouse pointer on the upper left corner of the graphs/tables, different export options will be shown hovering over the graph/table. The output options available are: For graphs XLS, CSV, PNG and PDF formats are available. For tables only XLS and SCV (see *Figure 11.3*).