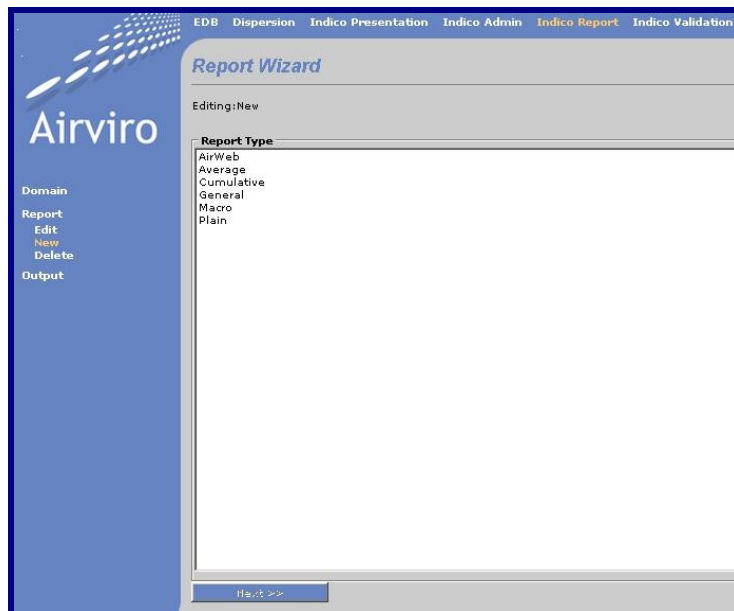




Airviro User's Reference

Working with the Indico Report



How to get the most out of your data stored in the Time Series Database of the AIRVIRO system

Working with Indico Report

How to get the most out of your data stored in the Time Series Database of the AIRVIRO system

Amendments

Version	Date changed	Cause of change	Signature
3.00.11	May 2004	New module	GS
3.11.20	Oct2007	Upgrade	GS
3.12	January 2009	Upgrade	GS
3.20	June 2010	Upgrade	GS

Contents

4.1 Introduction to Indico Report.....	5
4.1.1 What is Indico Report?	5
4.1.2 How does Indico Report client work?	5
4.2 Getting started.....	6
4.2.1 Overview of the Indico Report main window.....	6
4.3. The Main Menu of the Indico Report module.....	6
4.3.1. General Concepts	7
4.3.2. Database Concepts	7
4.3.3. The Report Wizard Subwindow.....	8
4.3.4. Basic Concept of Report Configuration.....	8
4.4. Default Report Types	9
4.4.1 Average	9
4.4.2. Cumulative	10
4.4.3.General	10
4.4.4. Macro	10
4.4.5. Plain	10
4.5. Examples	10
4.5.1. Example 1: Producing Daily Summaries	11
4.5.2. Example 2: Making Cumulative Instances	13
4.5.3. Example 3: Using the General Processor.....	15

4.1 Introduction to Indico Report

Indico Report is - together with Indico Administration and Indico Validation - one of the three main tools in Airviro Air Quality Management, intended for acquiring, storing, editing, presenting, analyzing, reporting and exporting time series data.

PI: Remove this Indico Report makes it easier the making of reports to present Airviro data.

4.1.1 What is Indico Report?

Indico Report is a powerful tool for reporting data stored in the time series database.

With Indico Report is possible to create reports that can be automatically executed at a specified interval such as at the end of every day. Typically this would be a summary table of some kind that is automatically sent as email or printed. There are many different types of reports to be used.

A set of five standard output formats (called process types) is provided. PI: Remove this The approach is very object orientated.

With Indico Report, you can:

- Create different kind of reports.
- Assess capture PI: Remove this and status of the data.
- Autmotically run reports at specified intervals.
- Reports can be sent to a mailbox, printer, screen or file.
- Use Indico Macros to create reports.
- PI: Remove this Automatically update reports as new data arrive.

An experienced user will be able to use the Airviro system as an *integrated monitoring system*, i.e. extract valuable information from the measured data and use it to evaluate dispersion calculations.

4.1.2 How does Indico Report client work?

Airviro has is a web based user interface. Airviro can be used from a PC or any other device running Internet Explorer 6 or later and Firefox.

After logging in on Airviro the Indico Report module can be selected. All data processing is made on the Airviro server and the results are transferred to the web browser.

Please note that JAVA JRE (run time plugin) must be installed and enabled in the web browser.

4.2 Getting started

After logging in the application by entering a username and password, the user is presented with a list of all available Domains (if none has being previously selected and stored), By selecting a Domain the top menu list will be refreshed to show all available Airviro Modules. After you have selected a module to work with, you can change the domain selecting the Domain menu (*Figure 4.2.1.1*)

All the examples explained here are based on the Airviro (Göteborg) Reference System, included in all Airviro systems delivered. Here you will find two years of hourly data, meteorological and ambient air measurement.

4.2.1 Overview of the Indico Report main window

After Indico Report has been selected, the user will see a list of menus on the left side of the window. To successfully complete the set up for a report, it is advisable to work through the menus sequentially, from **Domain** down to **Output**, because some settings may depend on previous choices.

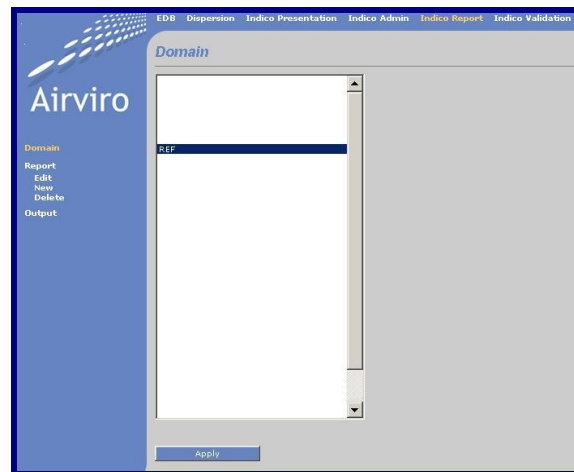



Figure 4.2.1.1 Domain

4.3. The Main Menu of the Indico Report module

The main window contains different menus:

	<p>DOMAIN This allows to select the Project with which is wanted to work. i.e. REF.</p> <p>REPORT Includes three different sub-menus, Edit, New and Delete. Allows the user to edit, define or delete Reports.</p> <p>OUTPUT Allows the user to display the report choosing from different available output options (mail, files, printer, screen)</p>
---	---

4.3.1. General Concepts

Domain... is the first menu, which takes you to a subwindow where you can select the domain for which the report will be made.

The next menu is **Report...** which is divided in three submenus **Load**, **New** and **Delete** each one of them takes you to different subwindows where you can Define New Reports, Edit or Delete existing ones.

In the **Output...** sub window you can preview or run an existing report.

4.3.2. Database Concepts

When working with Indico Report from Airviro you are accessing the time series database, so it is important to understand how a time series is defined.

A time series contains measurement observations. The following components must be defined in order to define a time series:

- **station** : It defines from which measurement site the data is being collected
- **parameter**: It defines which parameter is being measured, e.g. gas concentration, air temperature, wind direction, etc.

- **instance** This is used to differentiate among several measurements of the same parameter at the same site. In the case of DOAS measurements, the instance indicates which path (light beam) has been used for the measurements. In the case of meteorological mast measurements, the instance should indicate the height at which the measurement has been made. This component can also be used to differentiate between measured values and calculated values for a parameter (in which case the instance might instead be named CAL).
- **attributes** This component describes the available properties of the measurement. In the case of DOAS measurements, this could be value, standard deviation, light intensity or status. All of these properties belong to the same observation.

4.3.3. The Report Wizard Subwindow

The Report Wizard sub window is designed to be as versatile as possible, by incorporating the preferences of different customers. To open this option, select the **New** menu under the **Report** on the left side.

4.3.4. Basic Concept of Report Configuration

- **Report Types or Instances**

At the top you can create, select or delete **report instances**. Instances contain references to the **report type** and also configurations for these. It is possible to copy the configuration of an old report instance by first loading it and then pressing the **New** button. The current instance is saved with the **Apply** button.

- **Report type**

Each instance is linked to one report type. To select a report type from a list is the first step in Report Wizard. Go there by clicking **New** on the **Report**.

When a new Report type has been selected you must go through the entire wizard configuration clicking the **Next...** button. The input data requested is different for each report type. For each new instance you must go through all these steps once - but if you need to reconfigure anything you may step back, simply by pressing Back button and then choosing another choice. Once you have gone through all the wizard steps, at the final step you have press the **Apply** button in order to save the report configuration. A message saying that "Report saved" will be shown.

- **Output**

Report output can be sent as email, saved as a file or printed. In case of an email the destination email address is entered in the text box. In case of a file the full path of the filename is entered in the text box.

HINT: When you press the **Preview** button, the output configuration is NOT used, instead it is shown on your screen in an appropriate viewer. The Execute button will generate the output to the output destination that has been specified in the report setting.

- **Schedule**

The default is **None** which means that no automatic report will be made. To make a report **Output** must be used.

You can also select to automatically run the instance at certain intervals or events - in this case having output to a file normally does not make sense.

- **Execution**

Execution can basically take place in three slightly different ways:

1. When you press the **Preview** button in the Output window a new window opens, showing some status information on the progress while the report is generated, when this is finished, the data produced will be shown on screen.
2. When you press the **Execute** button, as in the previous case, a new window opens to show the progress while the report is generated, then the report will be sent to the **Output** destination specified in the configuration (screen, file, or email).
3. Instances that are saved with a schedule (for automatic execution) will be executed on batch, without showing the progress information window.

Note: logging out or closing the progress window will abort the execution.

4.4. Default Report Types

4.4.1 Average

Displays the selected time series data together with the average value and the standard deviation. Up to eight time series can be selected. You also write a title and select a format. PI: Remove this - if you have a PostScript printer then you will have better-looking printer output. If you have specified hourly values then the instance will be for the previous day, if you have specified daily values then the instance will be for the

previous month. It is also possible just to indicate a specific number of hours back in time.

4.4.2. Cumulative

Produces a more complex output of cumulative ratios, data capture and maximum and average values. PI: Remove this To use this, all selected time series should share the same parameter type. You set up the cumulative ratios by first choosing a number of levels, the distance between each level and the value for the first level. Alternatively you can specify 8 levels. The percentage of data that is below that level is calculated for each level. The result is a table showing percentile values. Again, if you have specified hourly values then the instance will be for the last day, if you have specified daily values then the instance will be for the previous month. It is also possible just to indicate a specific number of hours back in time.

4.4.3.General

It uses a saved Indico macro and produces a listing of data in a tabular format. You can choose a day, week, month, quarter or year. The instance will then be for the day, week, etc. previous to the specified date. When specifying a macro; title, restrictions and time series will be used to generate the output. The unit slot in the variable selection will be used for heading each one of the columns. When specifying the setup you can select the time period and resolution to be used. The higher resolution depends on which database you have available, e.g, it could be 5 minute, quarter hourly, etc.

The resolution or the time period is used for computing the total averages, maximum, minimum and standard deviation values that appear at the bottom of the table. An additional summary is also given for the resolution of the table.

4.4.4. Macro

It uses a saved Indico macro, keeping all the same information except the time period, which can be specified by the number of hours worth of data that you want to include in the graph. In this case the printout is graphical, and you can select output format. The stop time of the graph will be the end of the specified time period unless a number of hours forward has been specified.

4.4.5. Plain

It lists the data that you have selected for a specified number of hours. The stop time will be the specified time. Output can be plain ASCII text, SKV format (e.g. for importing to certain spreadsheet programs) or Airviro standard format.

4.5. Examples

4.5.1. Example 1: Producing Daily Summaries

Suppose that some of your real time data comes from an open path-measuring site (such as an Opsis analyser). With this data you do not only need to keep an eye on the data values but also the standard deviations, light levels and status values associated to the data. It is possible to print a daily summary for each one of the substances measured at the site, and in this example a table for NO₂ data will be created.

First select **Report** and then **New**.

Now, in the **Report Type** subwindow..., select **Average** from the list and click on **Next**.

A new window appears, where you have to choose a time period for your report: daily, monthly, or specified if you want to set the number of hours back for your report. Then press **Next** to continue. Select the time series you are interested in, time period could be requested in some cases depending on whether your selected data consists of hourly, daily values, etc.

Choose an Opsis **Station** (in this case Jarntorget), the **Parameter** (NO₂), the **Instance** (001) and the **Attribute** (value). Then select the other **Attributes** (Std dev, light and status). Now the four relevant time series for path 1 have been selected. Click on **Next** to continue through the wizard entering Report title, data capture limit and exceedance.

In next step you select the output format: plain text or PostScript. **PI Remove this:** PostScript looks a lot better, but you can only use it if the printer supports PostScript Level 2. Click on **Next**, now you have to set up an instance. Under **Destination** choose **Mail** and specify your email address so that the report output will be sent to you when it is executed. Finally click Next and save the report entering a name for your instance.

It is quite important to give it a meaningful name especially if you intend to create a lot of other instances. This one will be called **opsis_daily_no2**.

Preview.

The data used for this example had information with bad status values. The table ignores missing data and calculates the standard deviation and average value of the data that is present, however data with bad status is included unless otherwise is specified in a special resource file (ask your system administrator). These values are only relevant for the actual data values, as the standard deviation of the standard deviation is not too meaningful.

Once you are satisfied with your instance you might decide that you want a similar table to be made every day. To print it automatically once a day, choose Daily.

Schedule.

The report output will be automatically sent out at a specified time every night. The default time for daily instances is at fifty minutes past midnight, but this can be modified.

Title: Järntorget NO2 analysis
 Period: 91051201 - 91051224
 Date: 940420

Järntorget				
	NO2 /001 µg/m ³ Value	NO2 /001 µg/m ³ Std dev	NO2 /001 µg/m ³ Light	NO2 /001 µg/m ³ Status
910512 01	22.4	0.7	42.0	14.0
910512 02	25.9	0.7	42.0	14.0
910512 03	23.6	0.7	42.0	14.0
910512 04	59.8	0.8	42.0	14.0
910512 05	35.8	0.7	42.0	14.0
910512 06	5.6	0.7	42.0	14.0
910512 07	5.4	0.6	42.0	14.0
910512 08	6.7	0.6	42.0	14.0
910512 09	7.7	0.6	42.0	14.0
910512 10	8.3	0.7	42.0	14.0
910512 11	10.0	0.6	49.0	14.0
910512 12	10.5	0.7	42.0	14.0
910512 13	13.5	1.5	35.0	14.0
910512 14	16.0	0.8	35.0	14.0
910512 15	-0.6	3.6	14.0	4.0
910512 16	0.6	3.8	21.0	8.0
910512 17	1.9	3.5	14.0	8.0
910512 18	23.9	2.5	21.0	14.0
910512 19	23.4	1.2	28.0	14.0
910512 20	19.7	0.7	42.0	14.0
910512 21	30.7	0.7	42.0	14.0
910512 22	44.3	0.7	42.0	14.0
910512 23	38.1	0.7	42.0	14.0
910513 00	18.1	0.6	49.0	14.0
Std.dev.	15.0	1.0	10.0	2.6
Average	18.8	1.2	37.3	13.1

4.5.2. Example 2: Making Cumulative Reports

Create a new instance called **cumulative_so2**. Select the cumulative report type. PI Remove this , and you will see that this time you must choose time series for the same parameter. Select one of the available Reports (daily, monthly or specified) and Click on **Next...** to start defining the report. The **Time Series...** sub window appears where you can select the time series that you are interested in.

Choose some SO₂ time series. In this example the SO₂ levels from Molndal's three Opsis paths are used. Next you are asked to specify how many limits to use. In order to appreciate the cumulative approach it is best that the distance between limits is not too large so you will need quite a few - say 15. Now you must specify the distance between limits. This depends on the range of your data but you can choose a size of 10 for now and change it later if you need to. Next you must specify the start limit, i.e. the level that you would like for the first limit. Enter 0. Finally you will be asked for a table title and you must also select an output format - those beginning with PS are PostScript formats, in particular the PostScript grey scale format looks very good.

Title: SO2 levels at Mölndal			
Period: 89031301 - 89031324			
Date: 940110			
	Molndal SO2 /001 ug/m3 Value	Molndal SO2 /002 ug/m3 Value	Molndal SO2 /003 ug/m3 Value
0.00 ug/m3	100%	100%	100%
10.00 ug/m3	62%	58%	88%
20.00 ug/m3	42%	42%	58%
30.00 ug/m3	25%	25%	46%
40.00 ug/m3	8%	21%	29%
50.00 ug/m3	4%	21%	25%
60.00 ug/m3	0%	17%	21%
70.00 ug/m3	0%	8%	21%
80.00 ug/m3	0%	4%	8%
100.00 ug/m3	0%	0%	8%
110.00 ug/m3	0%	0%	4%
120.00 ug/m3	0%	0%	4%
130.00 ug/m3	0%	0%	0%
140.00 ug/m3	0%	0%	0%
Data capture	100%	100%	100%
Highest	55.30	88.90	130.00
Average	20.32	25.91	37.78

If you are using the reference database then you can look at the days with data for Molndal station.

Choose **None**: under **Schedule** and press the Next button. Save the report.

To visualize the report go to the **Output** menu, enter the date 890314 in the Time Period textbox and click on **Preview**, your instance will be run as if today's date were 14 March 1989 so it will use data from 13 March 1989. The data on that day had significantly higher values than usual and it is also interesting to see the big difference between the three different Opsis paths even though they are relatively close to each other.

Although this cumulative option might sound a bit complicated it is really quite simple. If you look at the results for path 1 you will see that:

All values are greater than 0 $\mu\text{g}/\text{m}^3$

62% of values are greater than 10 $\mu\text{g}/\text{m}^3$

42% of values are greater than 20 $\mu\text{g}/\text{m}^3$

4% of values (i.e. one value) are greater than 50 $\mu\text{g}/\text{m}^3$.

None of the values are greater than 60 $\mu\text{g}/\text{m}^3$.

For path 3 the values are much higher and there is a maximum value of 130 $\mu\text{g}/\text{m}^3$.

Title: SO2 levels at Mölndal
 Period: 89031301 - 89031324
 Date: 940420

	Möln dal		
	SO2 /001 $\mu\text{g}/\text{m}^3$ Value	SO2 /002 $\mu\text{g}/\text{m}^3$ Value	SO2 /003 $\mu\text{g}/\text{m}^3$ Value
0.0 $\mu\text{g}/\text{m}^3$			
10.0 $\mu\text{g}/\text{m}^3$			
20.0 $\mu\text{g}/\text{m}^3$			
30.0 $\mu\text{g}/\text{m}^3$			
40.0 $\mu\text{g}/\text{m}^3$			
50.0 $\mu\text{g}/\text{m}^3$			
60.0 $\mu\text{g}/\text{m}^3$			
70.0 $\mu\text{g}/\text{m}^3$			
80.0 $\mu\text{g}/\text{m}^3$			
90.0 $\mu\text{g}/\text{m}^3$			
100.0 $\mu\text{g}/\text{m}^3$			
110.0 $\mu\text{g}/\text{m}^3$			
120.0 $\mu\text{g}/\text{m}^3$			
130.0 $\mu\text{g}/\text{m}^3$			
140.0 $\mu\text{g}/\text{m}^3$			
Data capture	100%	100%	100%
Highest	55.3	88.9	130.0
Average	20.3	25.9	37.8

Gray levels: Here you can see two different examples of outputs. The first one is a plain output - it is made up of ASCII texts and symbols and can be printed out to any printer. The second is a PostScript output, which has a much better quality. In this particular case it is possible to show the percentages as a grey scale.

4.5.3. Example 3: Using the General Processor

First use Indico Presentation to define a new macro, such as a time series with 2 plot variables, x1 and x1+5. Put a title on the graph, as this will then be used as a title for the instance. Save the macro as **general_macro** (choose **Macro...Save..** under the main menu on the left menu bar). Now go back to the Report Module.

Click on **New....** and choose the **General** report type, then, click on the **Next...** button, which enables you to choose different options for the content and format. First select the macro on which the instance is going to be based on (look for the macro **general_macro** in the macro list).

Next you select the time period - in this example choose **Week**. Next you select the time resolution for the calculations, so choose **hour**. Click **Next** (in a weekly table daily values are displayed but you could use another resolution such as hourly or five minute values to calculate the mean, standard deviation, max. and min. values).

In the next step you select an output format - select **PostScript** if your system can handle it, otherwise select **plain**. This example shows calculated NO₂ levels compared with the actual levels.

Finally you are prompted to enter the destination and schedule and then to enter a name. Write **example_general** and click on **Apply**.

Comparison of calculated and actual NO₂ levels

		µg/m ³	µg/m ³
	891120	50.1	33.9
	891121	33.1	21.9
	891122	46.3	40.1
	891123	85.3	84.0
	891124	55.9	45.9
	891125	38.8	30.0
	891126	36.5	31.1
Hour	Average	49.4	41.0
	Std Dev	25.8	28.8
	Minimum	15.4	12.6
	Maximum	183.9	205.0
	Samples	70.0	70.0
Day	Average	49.4	41.0
	Std Dev	17.7	20.4
	Minimum	33.1	21.9
	Maximum	85.3	84.0
	Samples	7.0	7.0

Column 1 : $94+.0698*x1-0.117*x3+1030/(1+x1*x1)-222/\ln(1+x1)$

Column 2 : x5

Computation: Average, 0% data capture